









CAD-DRAWING
 THIS DRAWING WAS CREATED ON A COMPUTER AIDED DESIGN (CAD) SYSTEM. TO INSURE THE INTEGRITY OF THE DATA BASE, ALL CHANGES/REVISIONS MUST BE MADE ON THE CAD SYSTEM.

REVISION	DATE
A	02/16/16

TOOLS REQUIRED:

-  FLAT SCREWDRIVER
-  PHILLIPS SCREWDRIVER
-  PRY BAR
-  ADJUSTABLE PLIERS
-  RUBBER Mallet
-  UTILITY KNIFE
-  PUTTY KNIFE
-  PERSONAL PROTECTIVE EQUIPMENT (PPE)

MATERIAL TYPE:

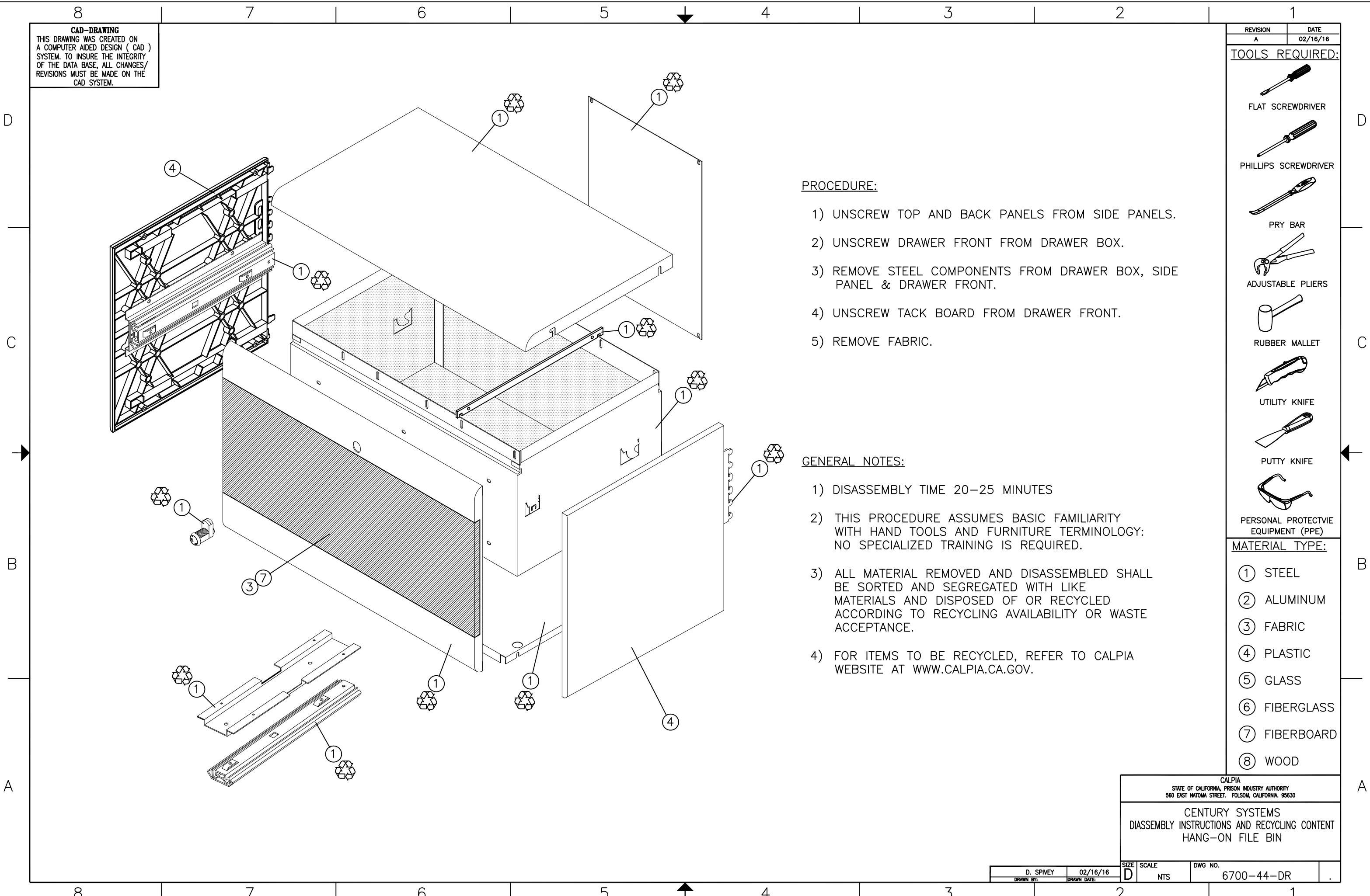
- ① STEEL
- ② ALUMINUM
- ③ FABRIC
- ④ PLASTIC
- ⑤ GLASS
- ⑥ FIBERGLASS
- ⑦ FIBERBOARD
- ⑧ WOOD

PROCEDURE:

- 1) UNSCREW TOP AND BACK PANELS FROM SIDE PANELS.
- 2) UNSCREW DRAWER FRONT FROM DRAWER BOX.
- 3) REMOVE STEEL COMPONENTS FROM DRAWER BOX, SIDE PANEL & DRAWER FRONT.
- 4) UNSCREW TACK BOARD FROM DRAWER FRONT.
- 5) REMOVE FABRIC.

GENERAL NOTES:

- 1) DISASSEMBLY TIME 20-25 MINUTES
- 2) THIS PROCEDURE ASSUMES BASIC FAMILIARITY WITH HAND TOOLS AND FURNITURE TERMINOLOGY: NO SPECIALIZED TRAINING IS REQUIRED.
- 3) ALL MATERIAL REMOVED AND DISASSEMBLED SHALL BE SORTED AND SEGREGATED WITH LIKE MATERIALS AND DISPOSED OF OR RECYCLED ACCORDING TO RECYCLING AVAILABILITY OR WASTE ACCEPTANCE.
- 4) FOR ITEMS TO BE RECYCLED, REFER TO CALPIA WEBSITE AT WWW.CALPIA.CA.GOV.



CALPIA
 STATE OF CALIFORNIA, PRISON INDUSTRY AUTHORITY
 560 EAST NATOMA STREET, FOLSOM, CALIFORNIA, 95630

CENTURY SYSTEMS
 DIASSEMBLY INSTRUCTIONS AND RECYCLING CONTENT
 HANG-ON FILE BIN

DRAWN BY: D. SPIVEY	DRAWN DATE: 02/16/16	SIZE: D	SCALE: NTS	DWG. NO.: 6700-44-DR
---------------------	----------------------	---------	------------	----------------------